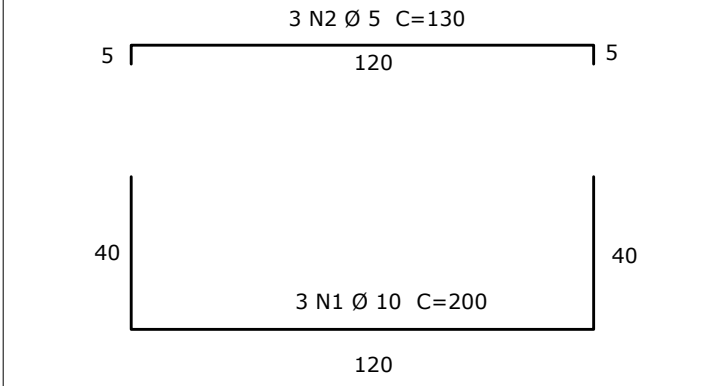
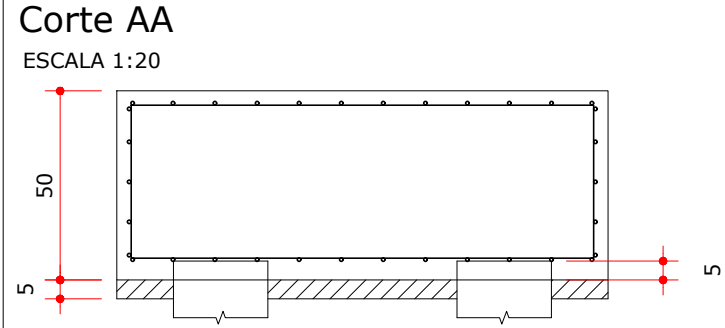
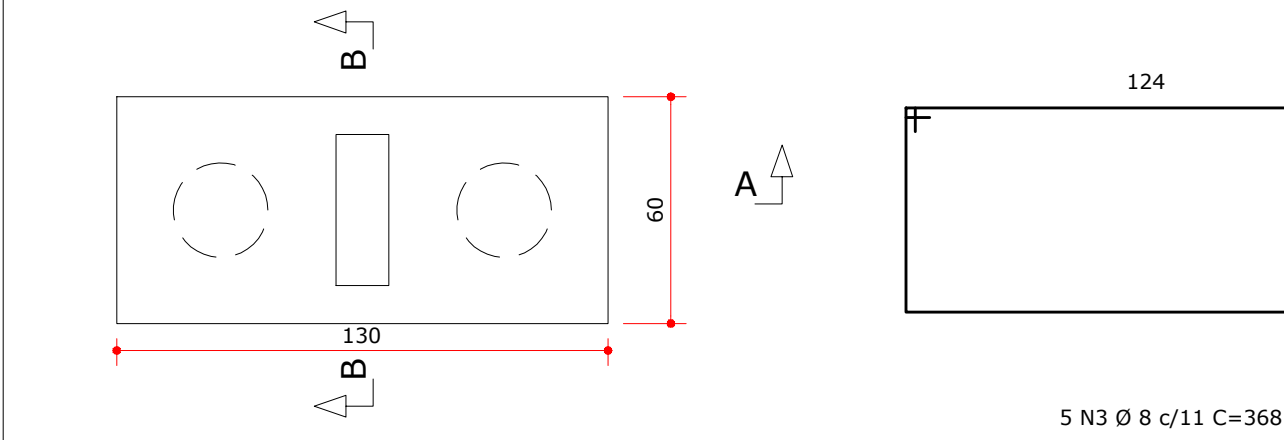
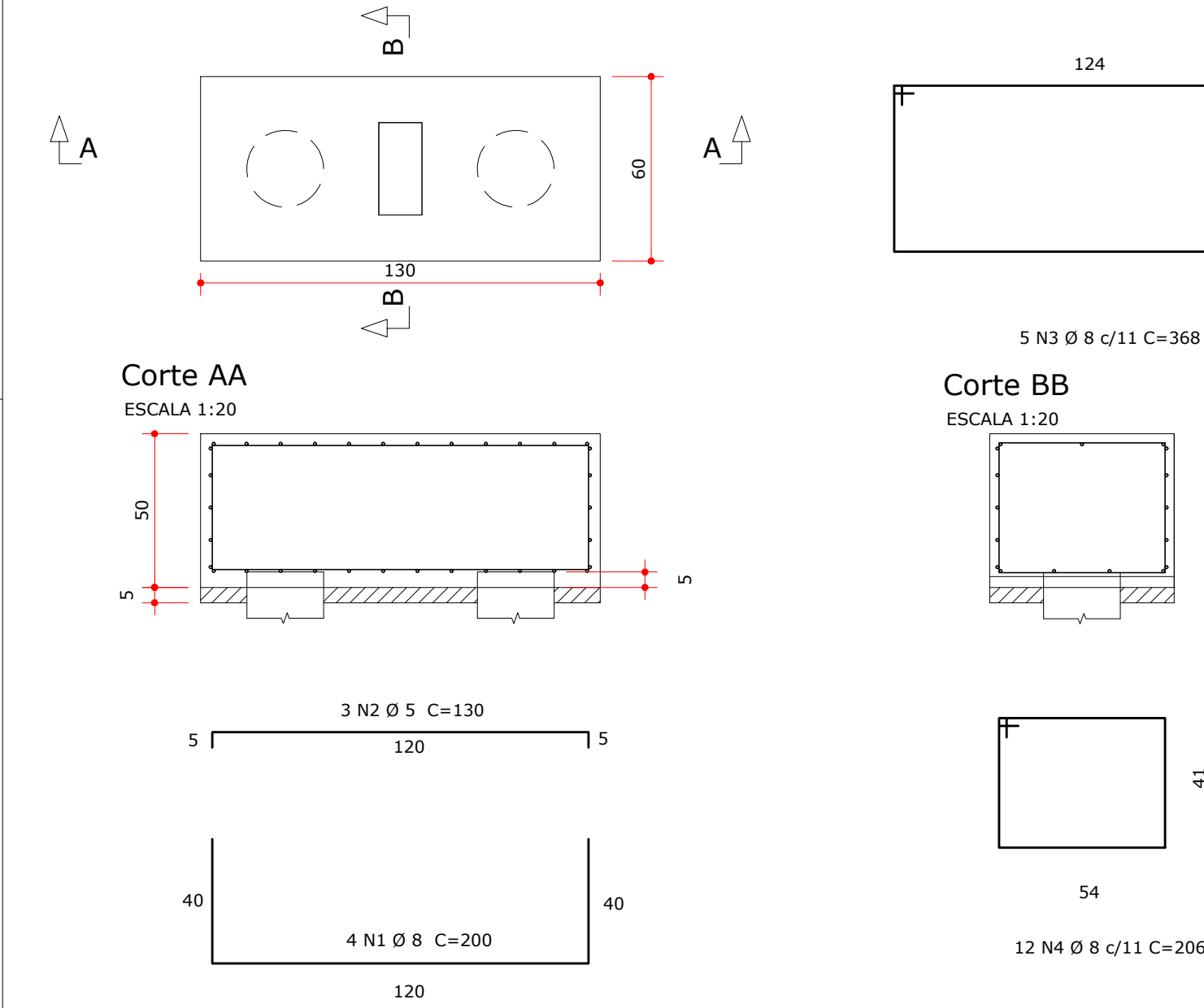


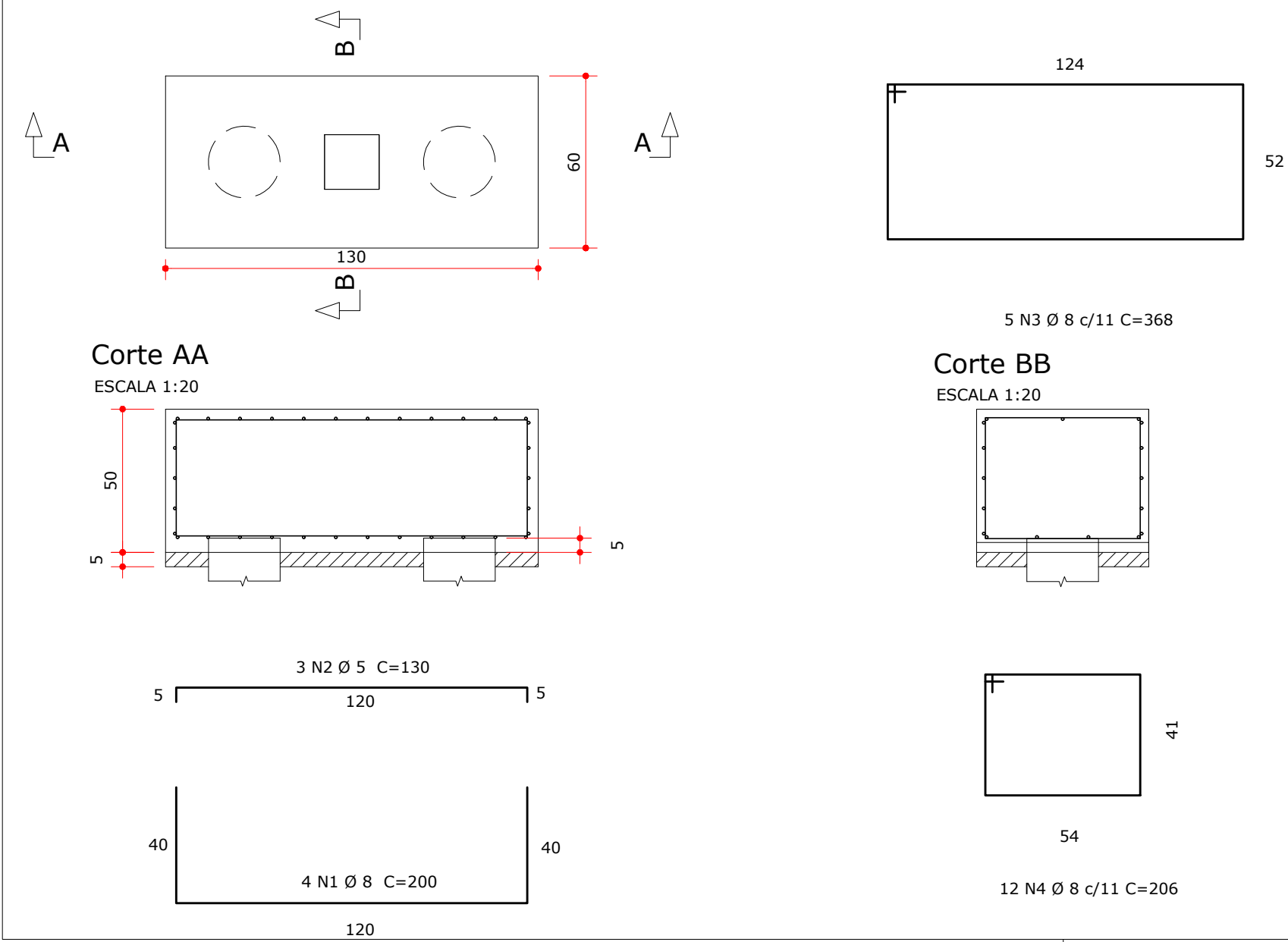
Bloco B1=B2=B3=B4  
ESCALA 1:20



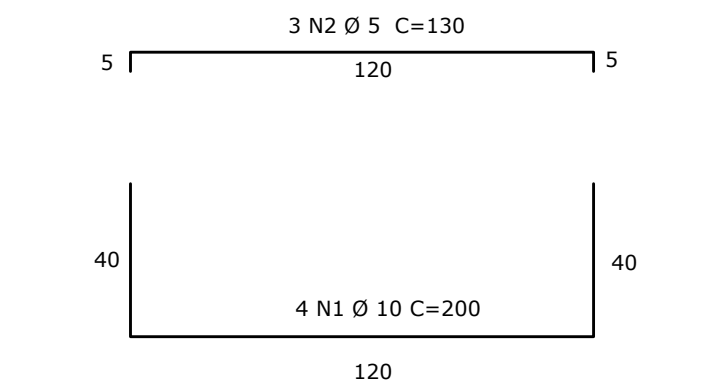
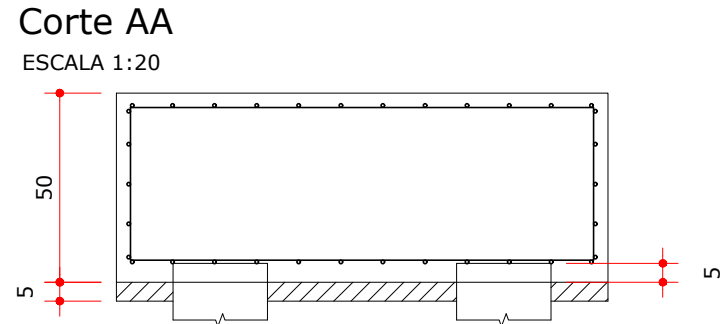
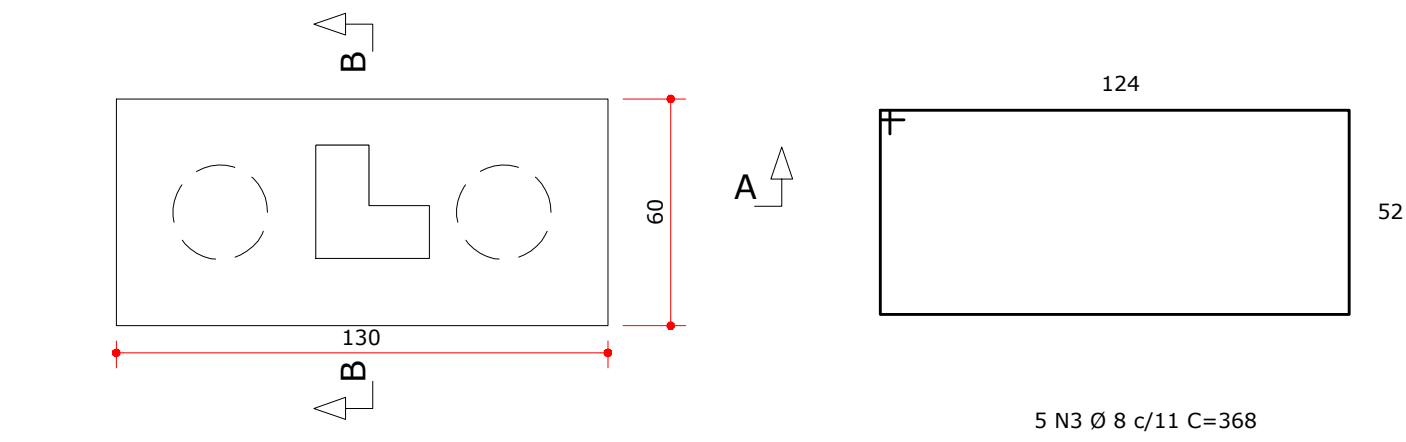
Bloco B7=B8=B9=B10=B15=B16=B22=B27=B28=B30=B33=B41  
=B47=B49=B50=B53=B55  
ESCALA 1:20



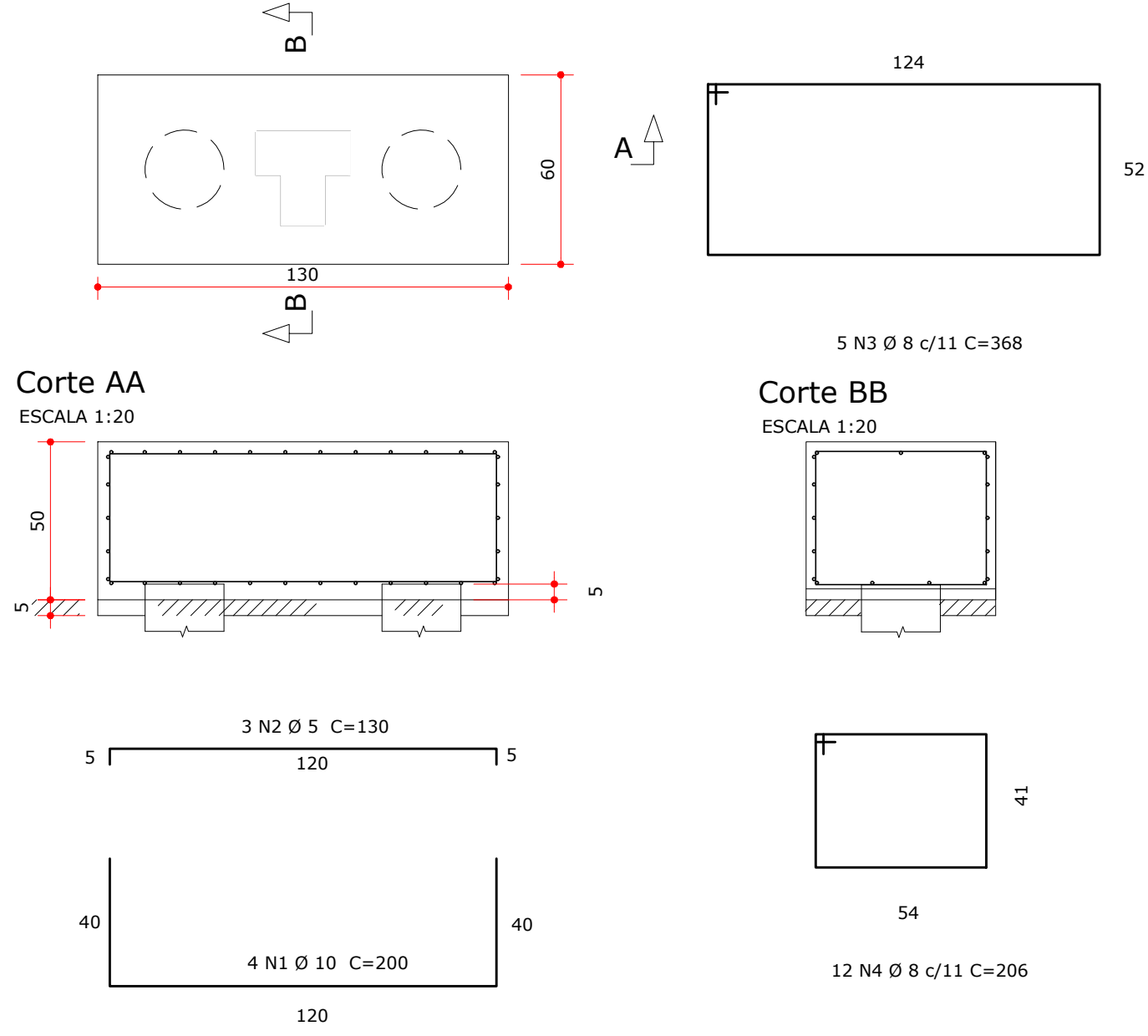
Bloco B24  
ESCALA 1:20



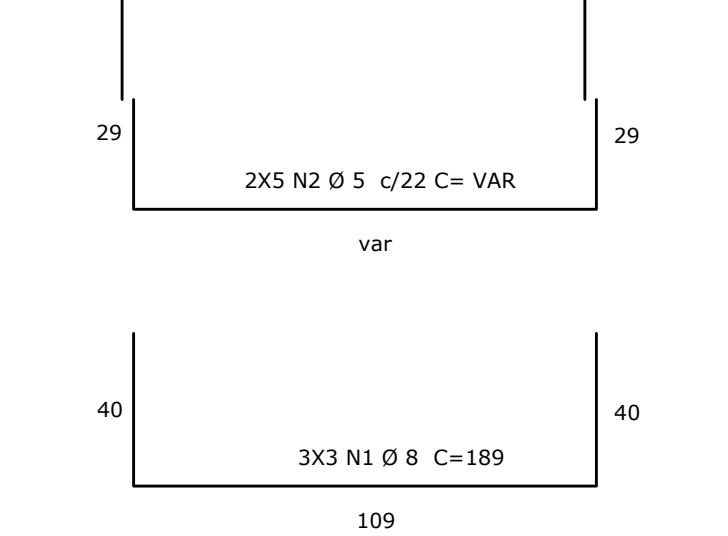
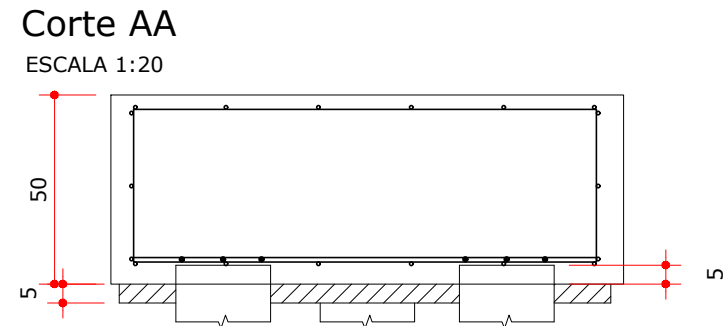
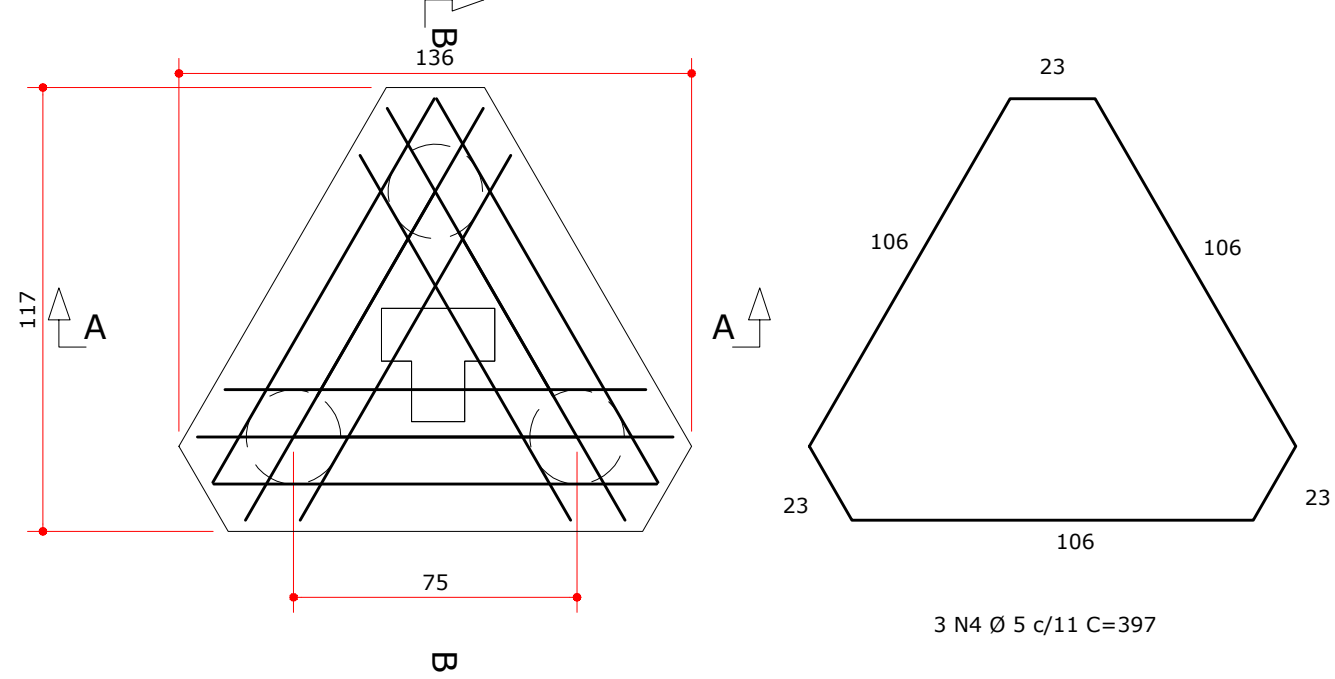
Bloco B6=B11  
ESCALA 1:20



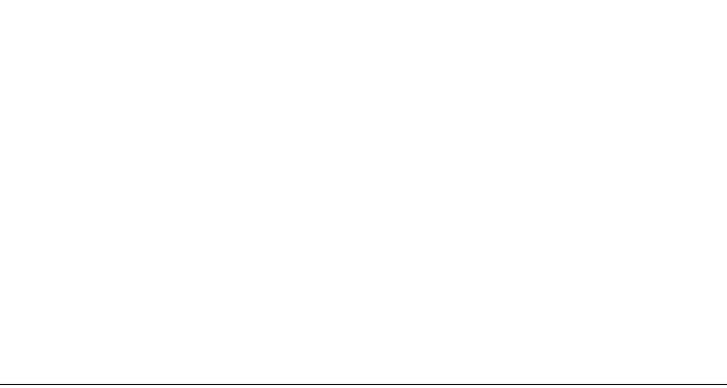
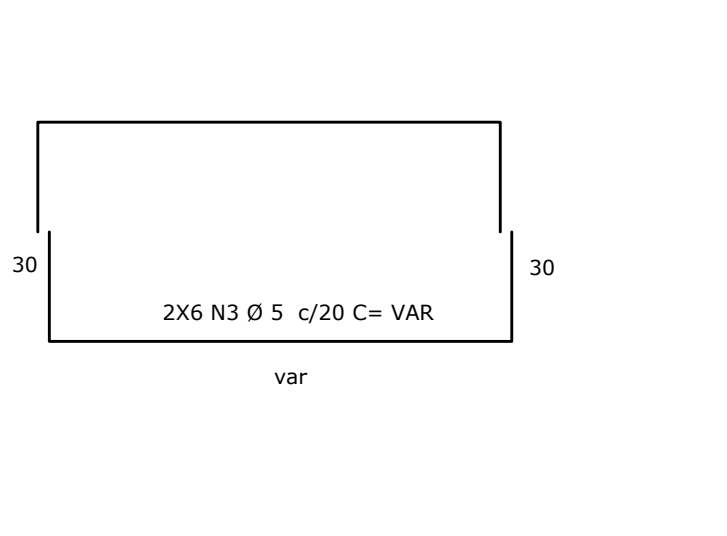
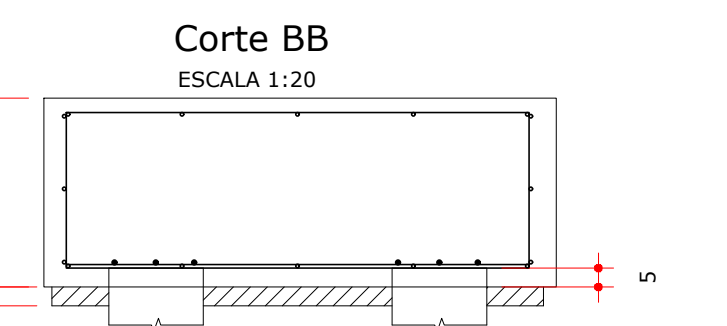
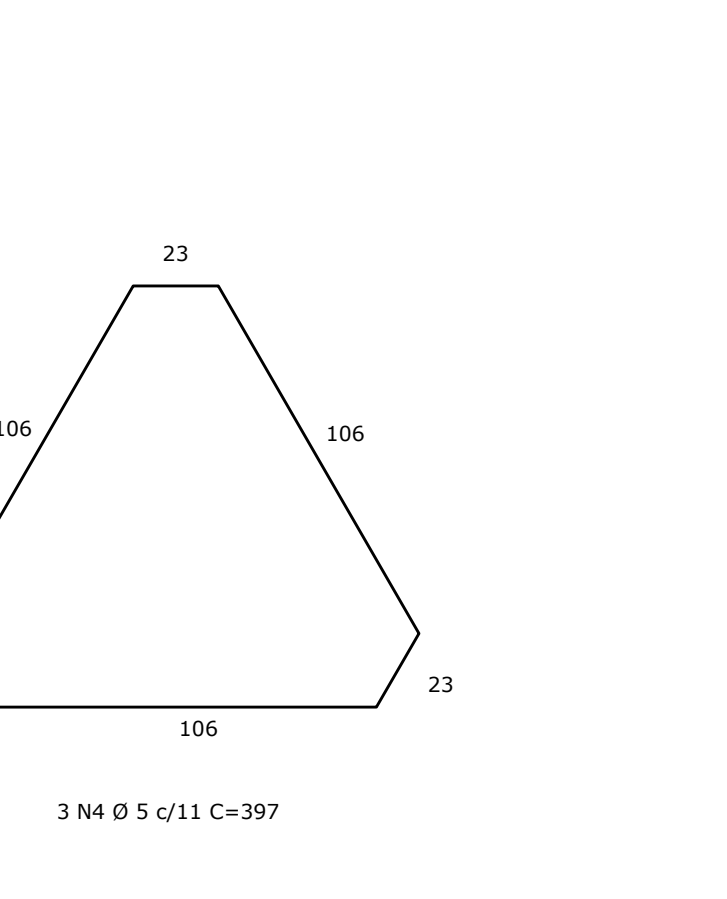
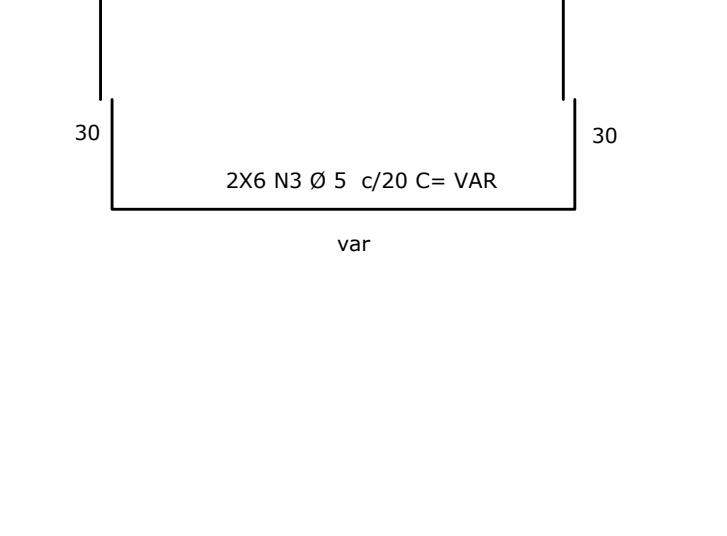
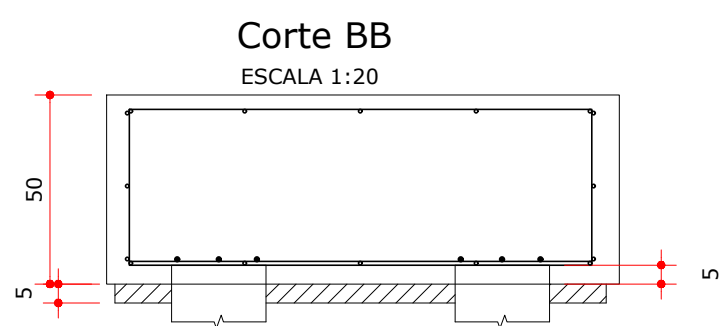
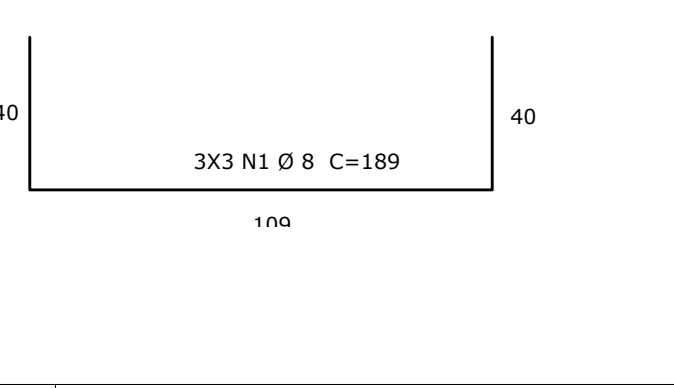
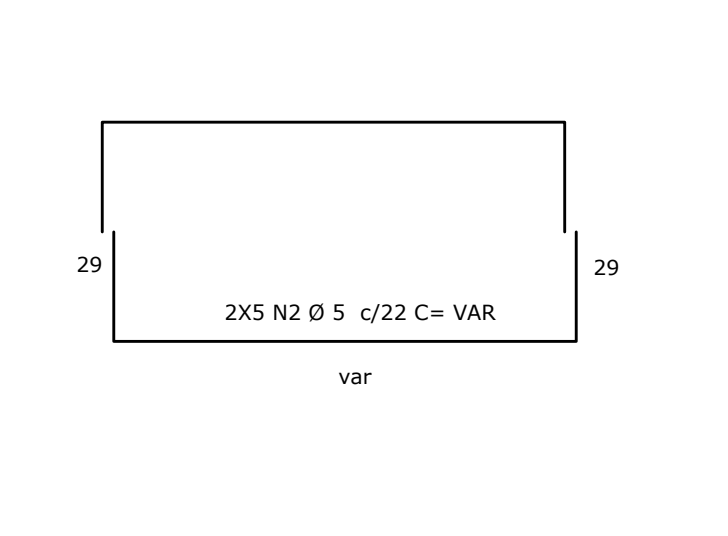
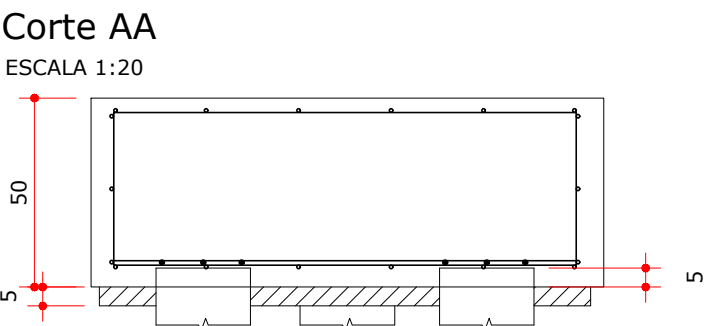
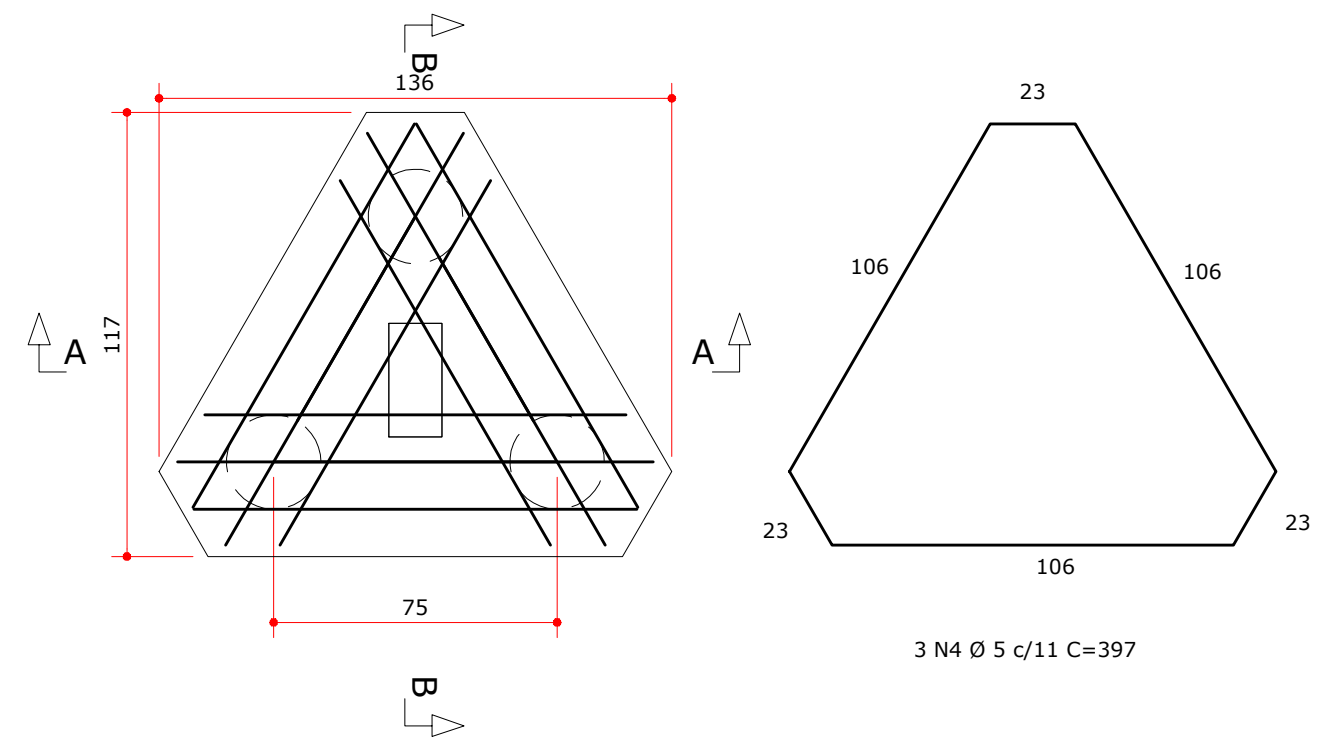
Bloco B12  
ESCALA 1:20



Bloco B5=B18  
ESCALA 1:20



Bloco B13=B17=B25=B34=B35=B39  
ESCALA 1:20



ACO	POS	BIT mm	QUANT	COMPIMENTO	TOTAL
CA 50	1	10	3	200	600
CA 60	2	5	3	150	300
CA 80	3	6	5	360	1800
CA 90	4	8	12	200	2472
B1					
CA 50	1	10	3	200	600
CA 60	2	5	3	150	300
CA 80	3	6	5	360	1800
CA 90	4	8	12	200	2472
B2					
CA 50	1	10	3	200	600
CA 60	2	5	3	150	300
CA 80	3	6	5	360	1800
CA 90	4	8	12	200	2472
B3					
CA 50	1	10	3	200	600
CA 60	2	5	3	150	300
CA 80	3	6	5	360	1800
CA 90	4	8	12	200	2472
B4					
CA 50	1	10	3	200	600
CA 60	2	5	3	150	300
CA 80	3	6	5	360	1800
CA 90	4	8	12	200	2472
B5					
CA 50	1	10	3	200	600
CA 60	2	5	3	150	300
CA 80	3	6	5	360	1800
CA 90	4	8	12	200	2472
B6					
CA 50	1	10	3	200	600
CA 60	2	5	3	150	300
CA 80	3	6	5	360	1800
CA 90	4	8	12	200	2472
B7					
CA 50	1	10	3	200	600
CA 60	2	5	3	150	300
CA 80	3	6	5	360	1800
CA 90	4	8	12	200	2472
B8					
CA 50	1	10	3	200	600
CA 60	2	5	3	150	300
CA 80	3	6	5	360	1800
CA 90	4	8	12	200	2472
B9					
CA 50	1	10	3	200	600
CA 60	2	5	3	150	300
CA 80	3	6	5	360	1800
CA 90	4	8	12	200	2472
B10					
CA 50	1	10	3	200	600
CA 60	2	5	3	150	300
CA 80	3	6	5	360	1800
CA 90	4	8	12	200	2472
B11					
CA 50	1	10	3	200	600
CA 60	2	5	3	150	300
CA 80	3	6	5	360	1800
CA 90	4	8	12	200	2472
B12					
CA 50	1	10	3	200	600
CA 60	2	5	3	150	300
CA 80	3	6	5	360	1800
CA 90	4	8	12	200	2472
B13					
CA 50	1	10	3	200	600
CA 60	2	5	3	150	300
CA 80	3	6	5	360	1800
CA 90	4	8	12	200	2472
B14					
CA 50	1	10	3	200	600
CA 60	2	5	3	150	300
CA 80	3	6	5	360	1800
CA 90	4	8	12	200	2472
B15					
CA 50	1	10	3	200	600
CA 60	2	5	3	150	300
CA 80	3	6	5	360	1800
CA 90	4	8	12	200	2472
B16					
CA 50	1	10	3	200	600
CA 60	2	5	3	150	300
CA 80	3	6	5	360	1800
CA 90	4	8	12	200	2472
B17					
CA 50	1	10	3	200	600
CA 60	2	5	3	150	300
CA 80	3	6	5	360	1800
CA 90	4	8	12	200	2472
B18					
CA 50	1	10	3	200	600
CA 60	2	5	3	150	300
CA 80	3	6	5	360	1800
CA 90	4	8	12	200	2472

ACO	POS	BIT mm	QUANT	COMPIMENTO	TOTAL
CA 50	1	8	4	200	800
CA 60	2	5	3	150	300
CA 80	3	6	5	360	1800
CA 90	4	8	12	200	2472
B24					
CA 50	1	8	4	200	800
CA 60	2	5	3	150	300
CA 80	3	6	5	360	1800
CA 90	4	8	12	200	2472
B25					
CA 50	1	8	4	200	800
CA 60	2	5	3	150	300
CA 80	3	6	5	360	1800
CA 90	4	8	12	200	2472
B26					
CA 50	1	8	4	200	800
CA 60	2	5	3	150	300
CA 80	3	6	5	360	1800
CA 90	4	8	12	200	2472
B27					
CA 50	1	8	4	200	800
CA 60	2	5	3	150	300
CA 80	3	6	5	360	1800
CA 90	4	8	12	200	2472
B28					
CA 50	1	8	4	200	800
CA 60	2	5	3	150	300
CA 80	3	6	5	360	1800
CA 90	4	8	12	200	2472
B29					
CA 50	1	8	4	200	800
CA 60	2	5	3	150	300
CA 80	3	6	5	360	1800
CA 90	4	8	12	200	2472
B30					
CA 50	1	8	4	200	800
CA 60	2	5	3	150	300
CA 80	3	6	5	360	1800
CA 90	4	8	12	200	2472
B31					
CA 50	1	8	4	200	800
CA 60	2	5	3	150	300
CA 80	3	6	5	360	1800
CA 90	4	8	12	200	2472
B32					
CA 50	1	8	4	200	800
CA 60	2	5	3	150	300
CA 80	3	6	5	360	1800
CA 90	4	8	12	200	2472
B33					
CA 50	1	8	4	200	800
CA 60	2	5	3	150	300
CA 80	3	6	5	360	1800
CA 90	4	8	12	200	2472
B34					
CA 50	1	8	4	200	800
CA 60	2	5	3	150	300
CA 80	3	6	5	360	1800
CA 90	4	8	12	200	2472
B35					
CA 50	1	8	4	200	800
CA 60	2	5	3	150	300
CA 80	3	6	5	360	1800
CA 90	4	8	12	200	2472
B36					
CA 50	1	8	4	200	800
CA 60	2	5	3	150	300
CA 80	3	6	5	360	1800
CA 90	4	8	12	200	2472
B37					
CA 50	1	8	4	200	800
CA 60	2	5	3	150	300
CA 80	3	6	5	360	1800
CA 90	4	8	12	200	2472
B38					
CA 50	1	8	4	200	800
CA 60	2	5	3	150	300
CA 80	3	6	5	360	1800
CA 90	4	8	12	200	2472

ACO	POS	BIT mm	QUANT	COMPIMENTO	TOTAL
CA 50	1	8	4	200	800
CA 60	2	5	3	150	300
CA 80	3	6	5	360	1800
CA 90	4	8	12	200	2472

ITEM	Quantidade	unidade
Área de forma:	58,46	m²
Vol Concreto:	16,25	m³
Escavação:	17,87	m³
lastrado	32,50	m²

NOTAS:  
-Unidades: cotas em centímetros, níveis em metros.  
-Cobrimentos mínimos p/ Aço: = 3,00 cm  
-Usar espaçadores para garantir o cobrimento  
-Relação Água/Cimento <=0,6  
-fck: Blocos de coramento = 30 MPa  
Estacas = 30 MPa  
-Ecs=26838 MPa  
-Todas as dimensões devem ser conferidas na obra

-Confirmar locação e níveis com o projeto arquitetônico  
-d.max,agreg <= 19 mm (brita 1)  
-Fazer cura úmida do concreto  
-As estacas devem ser concretadas no mesmo dia em que forem escavadas.  
-Os pilares devem estar centrados nos blocos de coramento, conferir a locação antes de escavar e concretar qualquer elemento da fundação.  
-Apilolar o fundo da estaca antes da concretagem.

APROVAÇÕES:

PREFEITURA MUNICIPAL  
CORONEL VIVIDA  
**APROVADO**  
DATA DE APROVAÇÃO: VER ASSINATURA DIGITAL



MUNICÍPIO DE CORONEL VIVIDA - PARANÁ  
GESTÃO 2025 - 2028

Divisão de Estudos e Projetos  
Praça Ângelo Mozzomo, s/nº  
Coronel Vivida - Paraná  
(46)3232-8300

Empreendimento:

MELHORAMENTO DA INFRAESTRUTURA DA EDUCAÇÃO  
INFANTIL DO MUNICÍPIO DE CORONEL VIVIDA - PR

CRECHE INFÂNCIA FELIZ

Prefeito Municipal	Conteúdo da prancha: FUNDAÇÃO: -DETALHAMENTO BLOCOS	Data: 31/05/2025
Anderson Manique Barreto PREFEITO	Área de Intervenção: 456,86 m²	Escala: Indicada
Responsável Técnico	ART DE PROJETO: 1720252957516	Prancha: F2 04
DOUGLAS CRISTIAN STRAPAZZON ENGENHEIRO CIVIL - CREA PR-209761/D	Desenho: Douglas Strapazzon	